

YMCA  
DOWNSLINK GROUP

YMCA

# Application Pack



Dear Applicant,

Thursday, 07 January 2021

**Re: Mobile Night Worker – Brighton & Worthing**

Thank you for your interest in the above post.

Enclosed is a job pack containing the following:

- ▶ **Job Profile and Person Specification – to refer to on your application**
- ▶ Principal Terms & Conditions
- ▶ Welcome to Applicants
- ▶ The YMCA Movement, Our Vision, About Us and Our Structure
- ▶ Policy on the Recruitment of Ex-Offenders

I have also enclosed an application form for your completion. Please be aware that the closing date for this vacancy is **Monday 25<sup>th</sup> January 2021 at 9am** and the interview date is **to be confirmed**.

Please email your completed application to. When submitting your application please save your application form as '**your name APPLICATION FORM**' and put the **job title** in the email subject line. Please submit your application preferably as a Word document, or as a PDF, via email to [recruitment@ymcadlg.org](mailto:recruitment@ymcadlg.org). If you would like a form with a dyslexia friendly font, please get in touch. We look forward to receiving your completed application.

If you have not heard from us within 2 weeks of the closing date, please assume that your application was not successful on this occasion.

YMCA DownsLink Group welcomes applications from all sections of the community. We value diversity and promote inclusion, which we demonstrate through our activities, as well as in our policies and working practices. Reinforced by our culture and values, we seek to create an inspiring and inclusive place to work.

***YMCA DownsLink Group requires all staff and volunteers to be committed to safeguarding and promoting the welfare of children, young people and vulnerable adults.***

***Successful applicants are required to undertake an Enhanced Disclosure via the Disclosure and Barring Service (DBS).***

Yours faithfully,



**Charley Roberts**  
**Recruitment and HR Manager**

# Job Profile **Mobile Night Worker** *South Sussex*

---

**Reporting to** PROJECTS MANAGER  
**Service Area** COMMUNITIES & PROPERTY SERVICES

## **Job Purpose**

To assist in the provision of supported housing services which support young people to articulate and achieve their aspirations and ambitions and to acquire the skills they need to live independent and fulfilling lives, and keep projects safe, secure, quiet and welcoming throughout the night.

Working within the local area, you will carry out regular and routine checks of unstaffed supported housing projects for young people, including communal areas, gardens, and the exterior of properties, to ensure they are as safe, secure, quiet and as welcoming as possible. When required, you will respond to calls from the on-call manager to carry out responsive checks when a report of an actual or potential incident or accident is received. You will be provided with a van and personal protective equipment.

## **Organisational Purpose**

Our vision is of an inclusive Christian movement transforming communities so that all young people can belong, contribute and thrive. In supported housing this means working in a person-centred way, using a strengths-based, Trauma Informed (TI) approach; we maximise choice and control for young people and we use Restorative Practice to resolve disputes and minimise evictions. From day one of the service, and throughout, we emphasise moving on to independence as the ultimate goal, but we also recognise that the pathway to independence is not linear, and that to be effective our service needs to be flexible and responsive, and allow young people to take managed risks in a safe environment.

***Our values are to welcome all, to support and to inspire***

## **Projects**

### **Brighton & Hove, Worthing and Adur**

We provide safe, secure accommodation for young people aged 16 to 35, who have been, or are at risk, of homelessness. We provide a groupwork and activities programme, More Than A Room, and offer a support package alongside the accommodation which actively encourages residents into education, training, employment or voluntary work. We work with residents to coach them in life and social skills, enabling them to move successfully into independent accommodation and sustain a tenancy.

Accommodation includes 24 hour staffed services, and unstaffed 'transitional' housing for young people with a lower level of support needs.

## What you will be doing

### Safety

1. Routinely check unstaffed supported housing projects to ensure they are as safe, secure, quiet and welcoming as possible, and that noise and potential or actual anti-social behaviour is addressed promptly.
2. Respond promptly to calls from staffed supported housing projects and the on-call manager throughout the night, and support staff to respond effectively to incidents, and accidents, and actual or potential situations where risk to residents, the public or staff is increased.
3. Provide cover at supported housing projects when staff are absent or when double cover is required.
4. Identify, keep track of, and share appropriately, the needs and the risks presented by young people to ensure they can keep themselves safe and that where possible their personal development isn't hindered.
5. Work with project-based night staff to maximise the wellbeing of residents and visitors by ensuring they follow health and safety protocols e.g. around signing in and out, fire safety, etc and understand and abide by house rules, Missing Persons protocols and the terms of their tenure agreement.
6. Working with project-based staff, address with young people any housing non-compliance issues such as anti-social behaviour, poor room condition or rule breaking concerns, using restorative practices and working in liaison with the rest of the team.
7. Deal effectively with, and de-escalate, any instances of threatening, aggressive or violent behaviour.
8. Provide an appropriate and compassionate response at times of crisis and liaise promptly with emergency services, and other members of staff e.g. staff at other projects, mobile night staff in other areas, on call manager, etc, as required.
9. In the event of damage to property that poses a risk to health and safety, make the property safe until such time as a full repair is possible, and provide a prompt and comprehensive update to the Project Manager as soon as possible.
10. Use the client database, InForm, to keep accurate and timely records of all contact with residents, make incident, accident and safeguarding reports, and share information appropriately e.g. with project staff, the on-call manager, visiting staff etc.

11. Report issues in accordance with policy and procedure and complete a log before the end of each shift which enables the provision of an effective handover to day time staff.

## Success

1. Work proactively, creatively and effectively alongside young people to develop their assets and talents.
2. Ensure young people are encouraged to take responsibility and action in their own personal development.
3. Work with Project Workers to coach young people to develop effective tools to minimise and handle life crises.
4. Use a range of strategies to address disengagement with the service offer.
5. Proactively encourage and promote the service/Foyer offer.
6. Support evening groupwork sessions and activities for young people that provide a platform for their assets and skills to be recognised and developed.

## General

1. Work a rota pattern four days on and four days off, to ensure cover throughout the night, and take responsibility for personal safety and safe service delivery during periods of lone working.
2. Participate in development, training and supervision and utilise Reflective Practice Supervision to encourage Trauma Informed care.
3. At all times comply with all YMCA DLG policies and procedures, in particular Safeguarding Children and Adults, and Equality and Diversity, and abide by the Code of Conduct.
4. Attend appropriate continuing professional development and training events and be committed to team events.
5. Ensure service users are made aware of key processes e.g. complaints, information sharing, getting involved, and clearly record how they wish to receive information e.g. one-to-one meetings, text, large print, language, braille etc.).
6. Carry out any other appropriate duties as directed by the Projects Manager to support and promote the work of YMCA DLG in accordance with the post holders' capabilities.

## Person Specification

- ▶ Experienced in and/or passionate about working directly with young people aged 16-35 and able to engage and relate well to this age group
- ▶ Understanding of the key risks, challenges and opportunities for young people
- ▶ Understanding of the risks involved in lone working
- ▶ Able to inspire and work proactively with young people to develop their talents
- ▶ A confident and capable communicator with the ability to engage, inspire, enhance learning and provoke thoughtful reflection
- ▶ An excellent planner and organiser, who is able to manage lots of tasks at the same time and keep appropriate records

- ▶ Motivated and resilient, with a 'can do' attitude
- ▶ Able to build strong relationships with other professionals in other organisations
- ▶ A strong team player who can support and challenge colleagues appropriately
- ▶ Able to solve problems and improve services and resources
- ▶ Able to use a range of methods for persuasion and achieving positive results with young people
- ▶ A commitment to the aims and values of the YMCA DownsLink Group

## **Principal Terms & Conditions**

### **1. Salary and benefits**

£22,640 per annum (pro-rata for part-time), (Plus £1,500 unsociable hours payment per annum), plus the following benefits:

- ▶ Competitive stakeholder pension with Legal and General
- ▶ Health Shield cash plan: covers the cost (up to an agreed limit) of health and well-being treatments
- ▶ Life assurance policy: 2x annual salary
- ▶ Company sick pay (up to 5 days in first 6 months, up to 10 days in first year, and up to 20 days after 1 years' service. Pro-rated for part time staff)

### **2. Holiday entitlement**

27 working days (rising to 29 after 5 years' service) plus all public holidays (pro-rated for part time staff).

### **3. Contract Type**

This is a permanent post.

### **4. Working hours**

Normal hours of work are 37.5 hours per week.

### **5. Working Pattern**

Typical working days are:  
Shifts will be on a 4 on 4 off rolling rota.

### **6. Location**

Your normal place of work will be South Sussex.

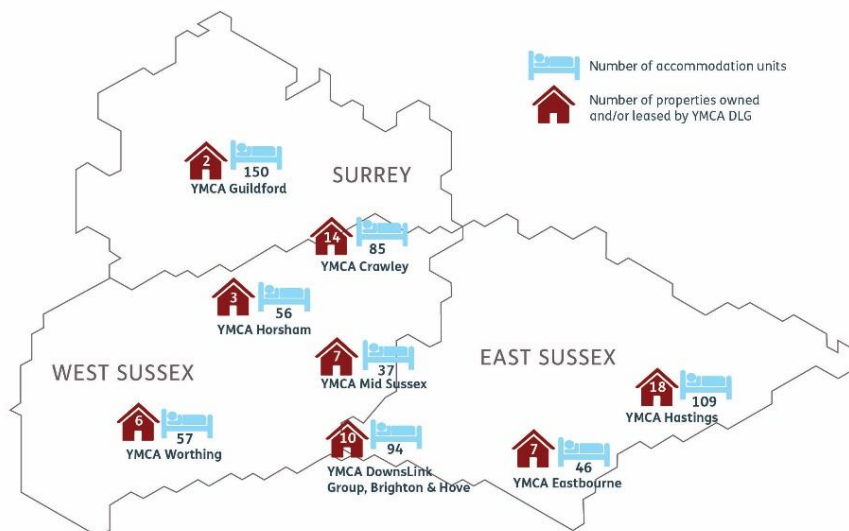
### **7. Probation**

There is a six-month probationary period.

## Welcome to Applicants

Thank you for your interest in this role and I hope you find this pack and our website [www.ymcadlg.org](http://www.ymcadlg.org) answer your questions. You probably will have heard of YMCA, the largest and oldest youth charity in the world, but you may not have heard about *us*. YMCA DownsLink Group is a grouping of local YMCAs across Sussex and Surrey, who over the past seven years have taken the decision to work more formally together to increase the capacity and impact of YMCA work in the region. Our last merger was in June 2018 when we welcomed Eastbourne & Wealden YMCA into the organisation. We took our name from a well-known bridle path that connects the South and North Downs called the Downs Link Way, following the merger of Sussex Central YMCA and Guildford YMCA in 2014. So, while we have a long heritage, we are a young and ambitious organisation. This creates opportunities that I hope you will relish.

## Our localities



## Our projects

- |  |  |
|--|--|
|  <p><b>YMCA SAFE SPACE</b><br/>Support and first aid for people intoxicated, distressed or injured during a night out.</p>                          |  <p><b>YMCA WISE PROJECT</b><br/>Supporting children and young people to stay safe in their relationships.</p>                  |
|  <p><b>YMCA ENGAGE</b><br/>Providing meaningful activity for older adults whilst training young people in a care specific coaching environment.</p> |  <p><b>YMCA RIGHT HERE</b><br/>Young people promoting health and wellbeing through education, campaigning and influencing.</p>  |
|  <p><b>YMCA YAC</b><br/>Advice and support for young people aged 13-25.</p>   |  <p><b>YMCA CHAPLAINCY</b><br/>Providing a non-judgemental space to discuss, explore, listen and support.</p>                   |
|  <p><b>YMCA EDUCATION &amp; TRAINING</b><br/>Enabling young people to achieve their full potential.</p>   |  <p><b>YMCA POSITIVE PLACEMENTS</b><br/>Supporting young people in their journey towards education, employment or training.</p> |
|  <p><b>YMCA CAFÉ</b><br/>A great place to eat, relax and meet up with friends.</p>  |  <p><b>YMCA DIALOGUE</b><br/>Counselling and therapeutic support for children, young people and families.</p>                   |
|  <p><b>YMCA SOCIAL ENTERPRISE SERVICES</b><br/>Grounds maintenance, landscape gardening, painting &amp; decorating and handyman.</p>                |  |



We believe that the work of the YMCA is transformational, and our vision is built on transforming young lives. At YMCA DownsLink Group our work is targeted towards young lives on the fringes of our society with the aim of helping them to *belong, contribute & thrive*. Our services are focused on five key themes:-

1. *Helping young people belong in the local communities they live in*
2. *Supporting wellbeing in young lives*
3. *Keeping children & young people safe*
4. *Helping young people achieve*
5. *Empowering young people to influence*

Last year our services reached over 13,000 young lives across Sussex & Surrey. We are an ambitious organisation committed to further increasing our reach and the impact of our work.

I hope that you are sufficiently interested to read on and find out more about YMCA DownsLink Group and this role. I look forward to receiving your application and wish you well.

I welcome your interest.

*Chas Walker*

**Chas Walker**  
**CEO, YMCA DownsLink Group**



# The YMCA Movement

## YMCA

The YMCA is the largest and oldest youth charity in the world. It is a global, faith-based movement responding to the needs of young people around the world. From its humble beginnings in the City of London in 1844, the YMCA has grown to become a worldwide organisation reaching over 55 million members in 119 countries. As the founding 'country', YMCA England & Wales plays an important role in the worldwide movement and as a local YMCA we are committed to be an active member of the YMCA movement nationally and internationally.

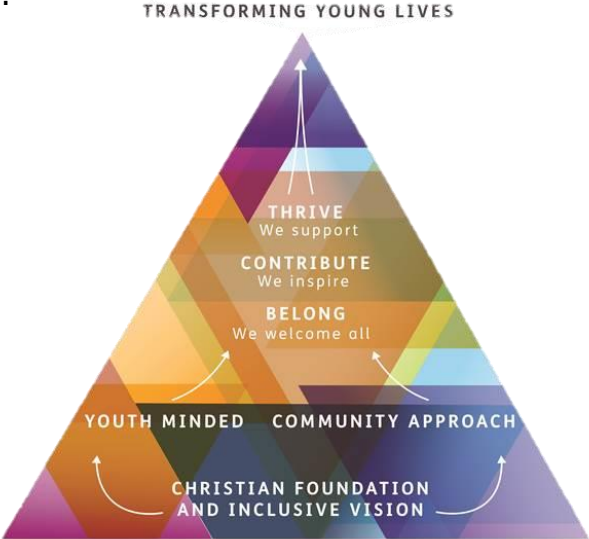
## YMCA England & Wales

The YMCA Movement in England and Wales is a federation of over 112 YMCAs that work across 740 recognised communities in England & Wales. Each YMCA is an independent, self-governing charity that affiliates to the YMCA Federation. [YMCA England & Wales](#) supports and facilitates the work of the Federation providing the YMCA with a national voice in supporting the YMCA vision of *transforming communities, so all young people can belong, contribute & thrive*. It also supports YMCAs by promoting high standards of working, sharing best practice, fundraising on their behalf, partnering with them to pilot new projects, and providing training opportunities for their staff and volunteers.

## Our Vision

*Our vision is of an inclusive Christian movement transforming communities so that all young people can belong, contribute and thrive.*

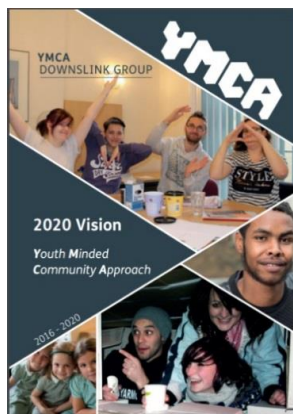
You will need to demonstrate a commitment to our aims and ethos, but **do not have to be a practicing Christian to be part of our organisation**. We value diversity in our staff team to reflect the people that we work with and our aim to be inclusive and celebrating diversity.



## About Us



YMCA DownsLink Group has approximately 400 staff and 150 volunteers and our current turnover is £12million. On an annual basis, we accommodate over 900 young people every year, provide community-based support, learning and advice services to over 5,000 young people and our specialist therapeutic services work with over 7,000 children, young people and families. *To read our latest Snapshot and find out more about our work last year, please [click here](#).*



YMCA DownsLink Group has an ambitious vision for the future which we launched in 2016 as our 2020 Vision with its aim to help transform us into a **Youth Minded Community Approach** organisation.

We want to be an organisation that is strongly rooted in the local communities in which we work, reflecting the 'DNA' of the YMCA that we are a ground up rather than top down Movement, where YMCAs come out of and are supported through local communities. Our aim is to grow the number of local YMCAs that YMCA DownsLink Group can support across Sussex and Surrey.

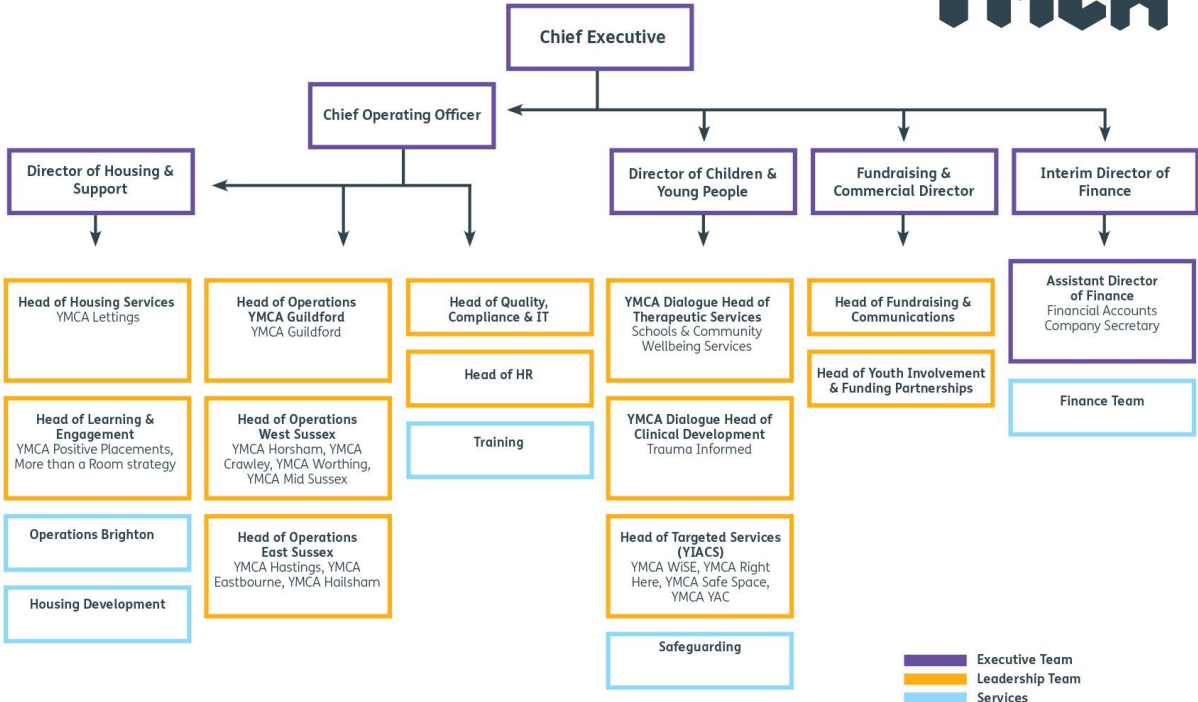
Alongside the local approach we also want to be an innovating organisation, developing specialist services that support our vision of young people belonging, contributing and thriving. So, we have continued to invest in 'signature' YMCA programs such as YMCA Dialogue, our counselling and wellbeing services, YMCA WiSE, our specialist exploitation service and many more. *To find out more about our 2020 Vision please [click here](#).*

For examples of our work with young people and the impact it has, please [click here](#)



# Our Structure

YMCA DOWNSLINK GROUP



## Policy on the Recruitment of Ex-Offenders

YMCA DownsLink Group actively promotes equality of opportunity for all, with the right mix of talent, skills and potential, and applications are welcome from a wide range of candidates.

We undertake not to discriminate unfairly against any applicant on the basis of a criminal record or other information revealed. Criminal records and other information will be taken into account for recruitment purposes only when they are relevant.

We select all candidates for interview based on their skills, qualifications and experience. We ask all applicants called for interview to provide details of their criminal record. Depending on the nature of the position applied for, YMCA DownsLink Group may request details of your entire criminal record or only of 'unspent' convictions as defined in the Rehabilitation of Offenders Act 1974.

We request that this information is sent under separate, confidential cover to a designated person within YMCA DownsLink Group and we guarantee that this information is only seen by those who need to see it as part of the recruitment process. We would point out that for the successful candidate, this information will be verified by requesting a Disclosure<sup>1</sup> statement from the Disclosure and Barring Service before the appointment is confirmed.

Failure to reveal information that is relevant to the position sought could lead to withdrawal of an offer of employment or subsequent dismissal.

We ensure that all those in YMCA DownsLink Group who are involved in the recruitment process have been suitably trained to identify and assess the relevance and circumstances of offences. We also ensure that they have received appropriate guidance and training in the relevant legislation relating to the employment of ex-offenders e.g. the Rehabilitation of Offenders Act 1974.

At interview, or in separate discussion, we ensure that an open and measured discussion takes place on the subject of any offences or other matters that might be relevant to the position.

For those positions where a Disclosure is required, application forms and guidance notes will contain a statement that a Disclosure will be requested in the event of the candidate being made a conditional offer of employment.

We undertake to discuss any matter revealed in a Disclosure with the person seeking the position before withdrawing a conditional offer of employment.

---

<sup>1</sup> Applicants for certain positions who are made a conditional offer of employment will be subject to a criminal record check – known as Disclosure – from the Disclosure and Barring Service

Having a criminal record will not necessarily bar you from working with YMCA DownsLink Group. This will depend on the nature of the position and the circumstances and background of any offences. However, as the nature of the YMCA DownsLink Group's work brings its employees & volunteers into contact with young people (those under 18 years old) and/or vulnerable adults, a criminal record or other information which makes an application unacceptable for a position of trust will render the applicant unsuitable.

As an organisation using the Disclosure and Barring Service (DBS) Disclosure service to assess applicants' suitability for positions of trust, this policy complies with the DBS Code of Practice.

## **Declaration of Criminal Background & Guidelines for Working with Young People and/or Vulnerable Adults**

The Rehabilitation of Offenders Act 1974 sets out to help people who have been convicted of a criminal offence and have not been convicted again in a specified period. This period is known as a rehabilitation period. Once a rehabilitation period has expired and no further offending has taken place, a conviction is considered to be 'spent'. Once a conviction is spent, the convicted person does not have to reveal it or admit its existence in most circumstances.

The Rehabilitation of Offenders Act 1974 (Exceptions Order) gives some exemptions from the Act, whereby details of 'spent' convictions have to be declared. One of these exemptions is working with young people and/or vulnerable adults. When recruiting people to work in such positions of trust an employer is entitled to ask for details of all convictions, spent and unspent.

If you are invited to an interview, please bring with you a completed Declaration of Criminal Background Form which is enclosed in this application pack. It asks for details of spent and unspent convictions, cautions, reprimands and final warnings. You should complete the form and place it in an envelope marked 'Private and Confidential', addressed to the Interview Panel. Your name should be clearly stated on the front.

The information relating to criminal convictions will only be seen by the interview panel if we are considering offering you employment. If you wish to discuss the information that you have given, please mention this to an interviewer. Having made its selection, the panel may wish to discuss any information given with you. Having a conviction will not necessarily bar you from consideration for the post. Criminal records will be taken into account only when they are relevant to the position for which you are applying. The information you provide will remain confidential.

If you are made a conditional offer YMCA DownsLink Group will apply for an Enhanced DBS Disclosure depending on the nature of the job.

The DBS offers organisations a means to check the background of job applicants to ensure that they do not have a history that would make them unsuitable for the post. DBS Disclosures are provided by the Disclosure and Barring Service, an executive agency of the Home Office. Enhanced disclosures provide details of a person's criminal record including convictions, cautions, reprimands and warnings; they also contain details from lists held by Government departments of those considered unsuitable for this type of work. Organisations using the DBS process must comply with the Code of Practice, a copy of which is available on request.

If you have any queries, please speak to a member of the HR team.